

Mineral Titles No.1094783

Yoo Hoo Pooley Lake 082L

Owner 226681 Duane Lee – (Assigned to Kulta Cayman SPC, PLG Segregated Portfolio)

August 14, 2024

Owner Review and estimates of in ground reserves based on assay and analysis from the **Assessment Report #20016 from 1988-1989 for Corona Corporation by R.G. Wells (Geologist)**

This assessment and potential in-ground reserve estimation is based on the average values obtained over a two-year program that included chip, grab and core sampling across the veins and property overall. Sampling showed gold values between 1 g/t (.035 ounces per ton) and 14.57 g/t (.51 ounces per ton). The following grab, chip and core sample reports resulted in samples that show as high 2.2 oz per ton in old riverbeds and as high as 4.6 oz per ton through some veins that run through the property, but this assessment is meant to cover the entire property so is only using the very conservative average values as submitted in the geologist report.

The entire property is 354 acres. Comparative gold mining operations in this region currently process up to 7000 tons of ore per day and it would then take 103 days to process an acre on average. This would then calculate a result of 727,641 tons per acre. Using this calculation, we get the results of a potential 256,857,273 tons of ore which when multiplied by a conservative average of 0.26 ounces per ton = 66,782,890 ounces of gold.

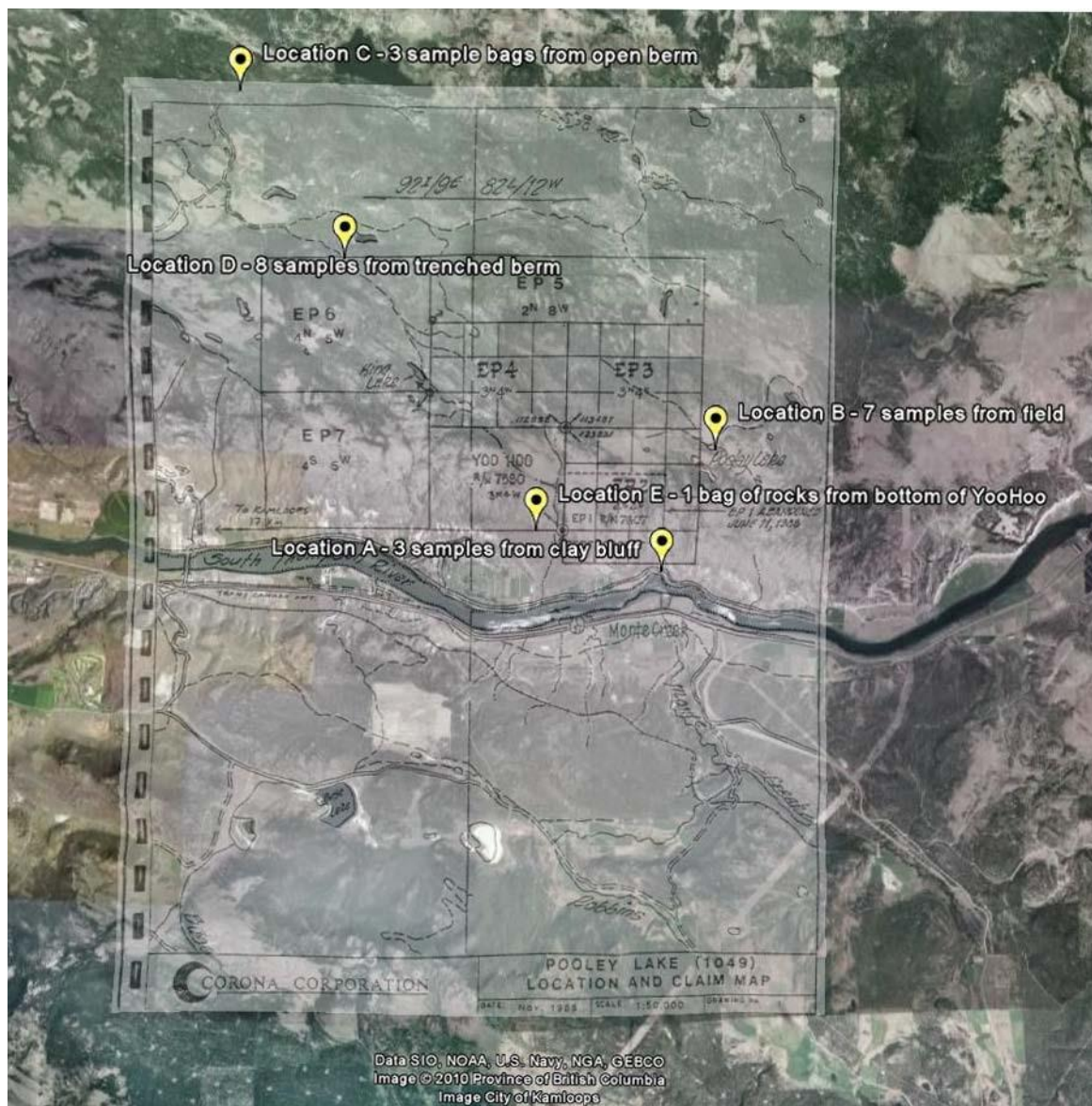
A recent review of the area reveals that no mining of any kind has taken place on the property and to date no mining permits have ever been issued, meaning the reserves are intact. Using the current price per oz of gold in August 2024 at \$2507 USD we have an estimated in ground value of **\$167,424,705,230.00** USD (One hundred and sixty-seven billion four hundred twenty-four million seven hundred and five thousand and two hundred and thirty United States dollars).

Pooley Lake Claim Sample Collection Summary

First visit August 2010

Second visit July, 2019

Map of entire Pooley Lake and Yoo Hoo Pooley Lake claims attached, listing original EP 6, EP 5, EP 7, EP 2 and Yoo Hoo from ARIS report 20016



Traveling west down Hwy # 1 we turned at the Lafarge Cement plant, crossed the Thompson River and turned east on Thompson-Shuswap Road. We continued driving along-side EP7 and Yoo Hoo towards EP 2.

We found an area where the Thompson River cut in close to the EP 2 claim area. From

here we gathered 3 samples bags from the clay bluffs just above the road (location A).

The sample co-ordinates were:

N 50-39-24

W -119-57-40



The brush was thick grass and sagebrush – in this area the cliffs are not considerably high, but you would need an experienced hiker to gain access past these bluffs to a higher elevation, as the cliff face was fairly steep.

We then drove east on the Trans-Canada Highway to gain access to the claim via Pooley Lake; crossing the Thompson River over an older bridge by the old ferry docks at Pritchard. We went north on Pinantan Pritchard Rd and east on McNity Rd which appeared to be a ranch/logging road.

We followed it past the small body of water called Pooley Lake – which is actually not even a lake, most would consider it a slough – until the road ended at a residence. Here we garnered an appreciation for the seriousness of “Private Property”.



So we back-tracked a half mile or so and found a reasonably flat field to get samples from. Here we used an auger to drill down 2 to 3 feet at 50 foot intervals and collected 7 samples (location B).

The sample co-ordinates were:

N 50-40-27

W -119-57-8

We also collected one small bag of rocks which were not overly abundant on the surface in this area, as the meadow appeared to be perhaps an old riverbed turned grass land.



Along this road were several small isolated ranches. Trees were sparse, and there was minimal exposed surface rock.

Any roads diverting from the “main” road were marked “private road” or “private property”.

August 28. 2010

Given the limited access to the claim area from the south and west, We decided to access claim areas EP 5 and EP 6 from the north by following Pinantan Pritchard Road (which is on the east side of the claim) north and then east over the top of the claim area. Although the Corona Corporation Pooley Lake Location And Claim Map illustrates a number of in-roads to the property, any that were sufficiently maintained to allow motor vehicle passage were clearly marked “private road” or “private

property". Fortunately, we found southerly passage on the east side of Pinantan Lake which is a developed recreational area with full services. Our objective was to get as far south as King Lake; which the locals at the corner store described as "a puddle you could literally drive through". We were also advised that at this time of year bears were an issue.

As we travelled south on a logging road we came across an exposed berm which, while not quite within the claim area, allowed us to quickly gather 3 samples (location C). The sample co-ordinates were:

N 50-43-16

W -120-03-5



We also noticed a white foamy substance that appeared to be everywhere there was running water along the road.

While we were continuing south the weather took a turn for the worse and it began to hail and rain very heavily. As we were on a dirt road it quickly became very muddy and the possibility of the road washing out was quite high. Not wanting to get stuck in the mud we stopped immediately and gathered 8 samples from a 3 foot trenched berm (location D).



The sample co-ordinates were:

N 50-41-53

W -120-144-44

Next we drove back to the EP 2 and Yoo Hoo claim area. As there were no roads to the base of the cliff, we hiked in about a half mile to the foot of a cliff face and collected 3 bags of loose rocks; 2 bags from about 100 yards from the cliff and one from directly in front (location E).



The sample co-ordinates were:

N 50-39-43
W -119-59-19

Additional pictures of terrain within the area:



